

LSEG Workspace ESG Quick-Start Guide

(User Guide)



LSEG DATA &
ANALYTICS

Contents

- ESG 3
 - What is the ESG app? 3
 - Statement View 4
 - Sustainability Dashboard 5
 - Peer View 6
 - Report View 7
 - Chart View 8
 - SFDR View 9

ESG

An overview of the company ESG (Environmental, Social and Governance) app including how to use the different views on offer.

What is the ESG app?

ESG stands for Environmental, Social and Governance. The ESG app provides information on company-level ESG performance, including company-reported raw data, normalized metrics, LSEG’s proprietary ESG scores and additional analytics. It covers more than 12,500 public and private companies, which represents over 85% of the global market cap. In the app, data can be displayed in four different views depending on the information and level of detail you want to see.

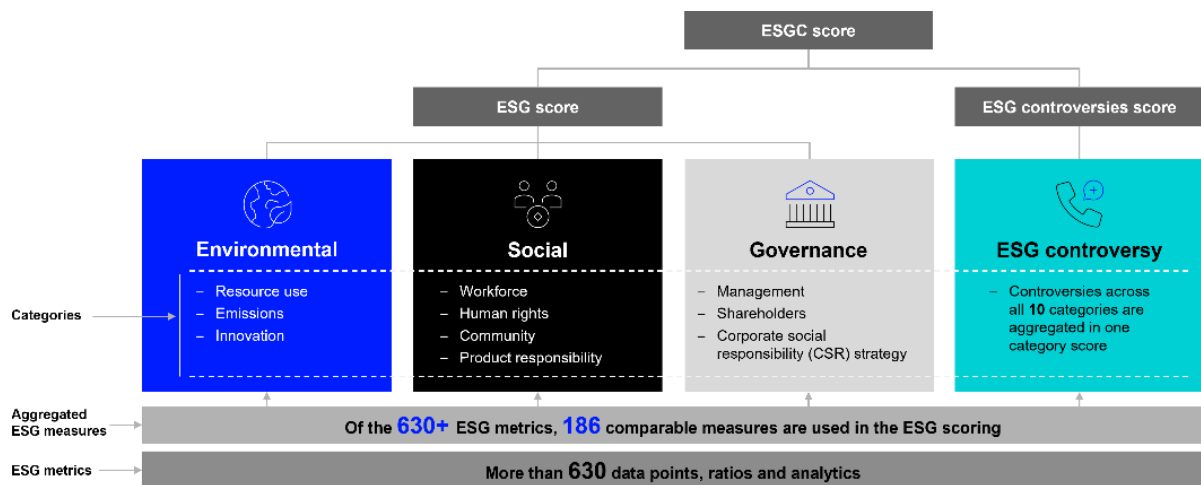
There are four view options to choose from within the ESG app: statement, peer, report and chart. Each gives a different display of data and level of detail.

To launch the app, type a company identifier, followed by a space and then ESG (e.g. LSEG ESG) into the search bar and press enter.

What is an ESG score and how is it calculated?

ESG scores are a series of relative peer rankings used to evaluate a company’s ESG performance at the metric, category, pillar and summary levels.

Find the [LSEG ESG Scores Methodology here](#).



How a LSEG ESG score is calculated

Statement View

The statement view gives the most detailed display of a company's ESG performance.

It includes as-reported and standardized data, and shows scores at metric, category, pillar and summary levels. Click-through audit functions let you open the source documents from which data was collected.

Scoring Measure	2021	2020	2019	2018	2017
Reported End Date	2021-12-31	2020-12-31	2019-12-31	2018-12-31	2017-12-31
Reporting Currency	GBP	GBP	GBP	GBP	GBP
Report Status	Complete	Complete	Complete	Complete	Complete
ESG Report Scope	Yes	Yes	Yes	Yes	Yes
ESG Reporting Scope	100%	100%	100%	100%	100%
ESG Report Auditor Name	Deloitte-Cole LLC	S&P SA	S&P SA	S&P United Kingdom Limited	S&P United Kingdom Limited
ESG Combined Score	A+	A+	A+	A+	A+
ESG Score (Weight: 100.0%)	A+	A+	A+	A+	A+
Environmental Pillar Score (Weight: 44.0%)	A+	A+	A+	A+	A+
Social Pillar Score (Weight: 26.0%)	A+	A+	A+	A+	A+
Governance Pillar Score (Weight: 46.0%)	A+	A+	A+	A+	A+
ESG Controversies Score	A+	A+	A+	A+	A+
Resource Use Score (Weight: 1.0%)	A+	A+	A+	A+	A+
Resource Reduction Policy	True	True	True	True	True
Policy Water Efficiency	True	True	True	True	True
Policy Energy Efficiency	True	True	True	True	True
Policy Sustainable Packaging	True	True	True	True	True
Policy Environmental Supply Chain	True	True	True	True	True
Resource Reduction Targets	True	True	True	True	True
Target Water Efficiency	True	True	True	True	True

Statement view filters

You'll find the statement view filter options in the left-hand panel.

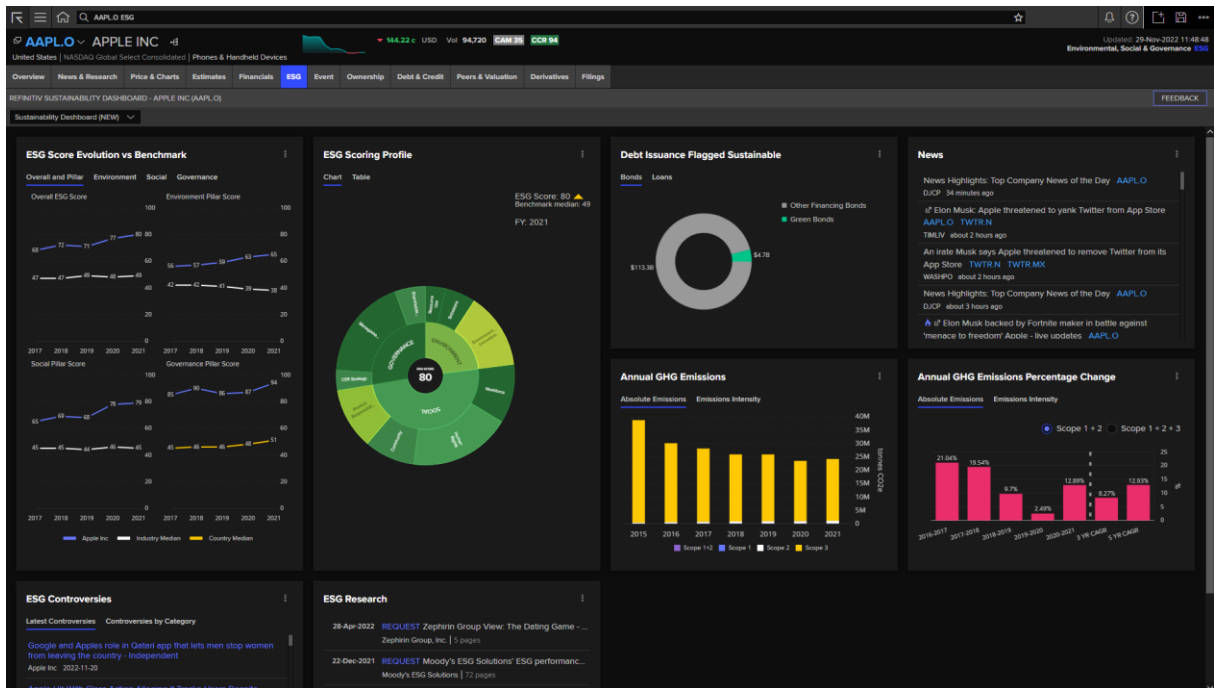
- Pillar - This lets you quickly switch focus between the various type of pillars and controversies. For example, select the environmental pillar, and this is the only data you will see.
- View - Choose between the default standardized data view or As Reported, where you can view data directly from the sourcing documents.
- Number of Periods - You can access data as far back as far as 2003.
- Components - There are more than 630 ESG metrics. Up to 186 of these are used the calculate ESG scores. Use this filter to expand or narrow the view.
- Statement Data - This refers to ESG statement header data such as the reporting period, period end date, currency, reporting scope and auditor name. You can choose to add or remove these items from the top of the statement view.
- Statement - ESG scores are only calculated when all annual data is collected and reviewed. Select Include Partial to see companies that have released highlights but not a full ESG report.

Sustainability Dashboard

The sustainability dashboard allows you to get a broad view of the sustainable practices of a company.

The dashboard provides one view which includes:

- Scores: ESG and pillar scores versus along with the ESG score profile are available to get a fuller picture of a company and its operations.
- Debt issuance: Discover the amount of sustainable bonds and loans a company has issued.
- Green House Gas emissions: discover absolute emissions and emission intensity across scope 1, 2 and 3.
- Sustainability details: the dashboard also includes a wider picture of the sustainability and sustainable practices of a firm by providing the latest ESG news, research and controversies associated with a company.



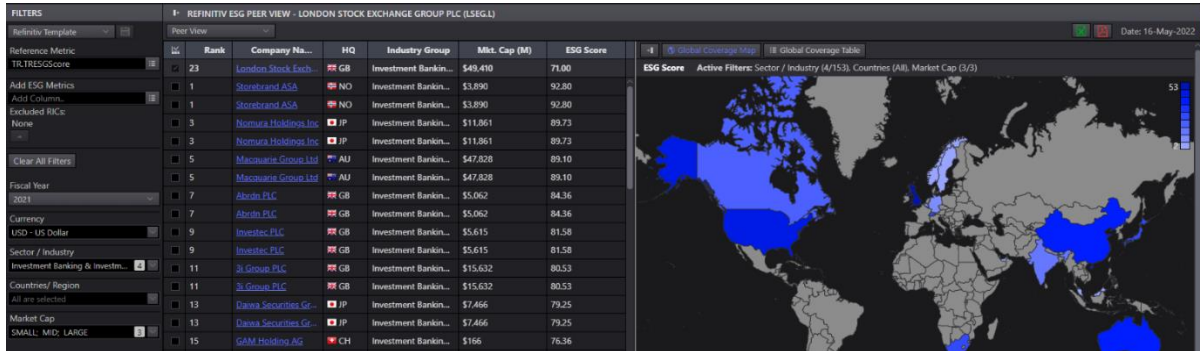
Peer View

The peer view lets you easily compare a company with chosen peer groups.

You can apply custom peer filters and add additional data. You can use one of the existing templates for comparison or create your own.

If you are creating your own, use the Reference Metric to choose the way in which the peers are ranked, like ESG combine score or environmental.

Additional filters are available to refine peer criteria and report currency format.



Additional charts

To the right of the screen you will see two additional charts showing global coverage and peer trends.



Global coverage chart

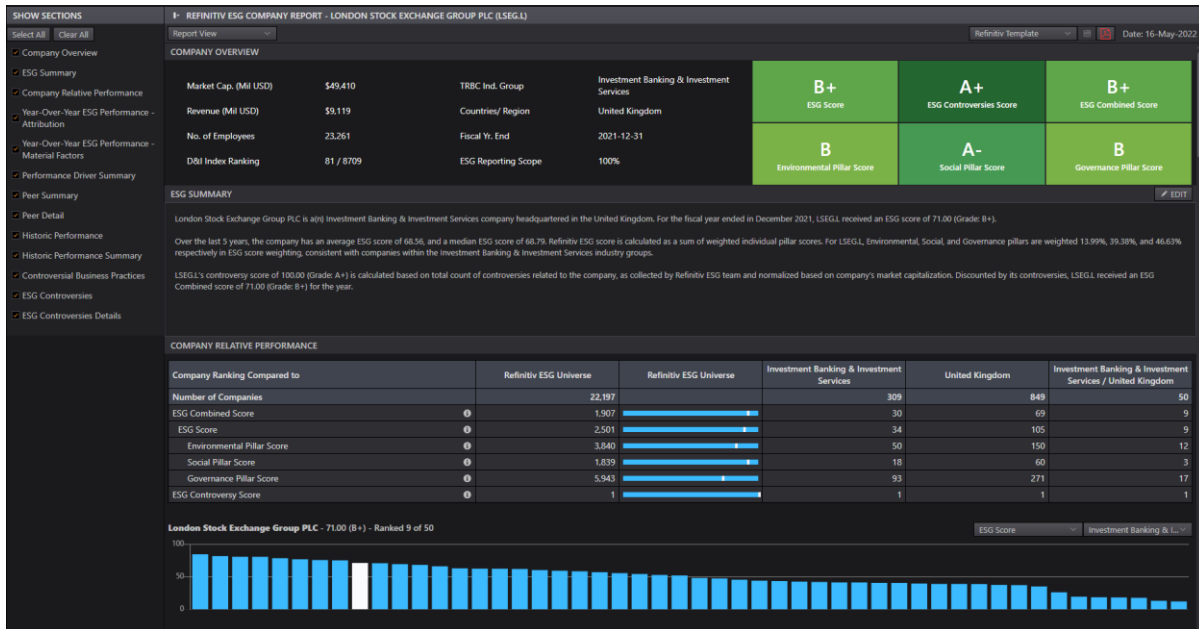


Peer trends chart

Report View

Use the report view to see a company's full ESG profile.

You can add or remove sections and replace any auto-generated text with your own commentary. The report can be saved as a template and shared as a PDF document.



How to create a report

1. Use the left-hand panel to select which sections you would like to include in your report.
2. If you wish, add your own commentary to three sections: ESG Summary, Performance Drive Summary and Historic Performance Summary. Select the Edit button on the top right of each section.
3. If you wish, customize the Peer Summary. Select Custom from the dropdown menu. The first column cannot be edited, but you can change the peers in the following columns. Double click the column head, start typing a name and choose a company from autosuggest. If you do not wish to customize, you can choose from other peer options in the Peer Summary dropdown menu.
4. Save your report or create a PDF using the corresponding icons at the top right of the report. Note: Saving will retain your section and data item selections, but won't save references to specific companies. For example, custom peers won't be saved but thematic data items will.

Chart View

The sunburst chart option gives a broad view of LSEG’s ESG methodology. It is the simplest way of viewing data in the ESG app.

You’ll get a more visual demonstration of what is used to get a company’s overall ESG score.

Select any category in the chart to zoom in and see it in more detail. The table on the left reflects what is displayed in the chart at any given time.



SFDR View

Use the SFDR view to see a company's exposure to SFDR performance.

View details about your chosen company on SFDR Tables 1, 2 and 3, allowing you to perform audits at the company SFDR indicator level.

The SFDR view provides details on the company's four closest peers by market capitalisation across country or industry, allowing you to get a better view on a company's performance and click through to the original source for each data point.

REFINITIV ESG SFDR VIEW - LONDON STOCK EXCHANGE GROUP PLC (LSEGL)

SFDR View | Closest four peers by market capitalization and Investment Banking & Investment Services | Compare by year

TABLE 1: PRINCIPAL ADVERSE SUSTAINABILITY IMPACTS STATEMENT

Adverse sustainability indicator	Metric	Refinitiv Level of Match	Refinitiv Data Measures	LSEGL	ICLN	038LHK	MOGLAX	KKRN
				London Stock Exchange	Intercontinental Exchange	Hong Kong Exchange	Macquarie Group Ltd	KKR & Co Inc
				2021	2020	2020	2021	2020
Indicators applicable to investments in investee companies								
Climate and other environment-related indicators								
GREENHOUSE GAS EMISSIONS								
1. GHG emissions	Scope 1 GHG emissions	Direct	CO2 Equivalent Emissions Direct, Scope 1	0	1,000	4,568	166	461
	Scope 2 GHG emissions	Direct	CO2 Equivalent Emissions Indirect, Scope 2	0	106,366	50,452	19,122	21,983
	From 1 January 2023, Scope 3 GHG emissions	Direct	CO2 Equivalent Emissions Indirect, Scope 3	0	567,747	19,061	978	524
	Total GHG emissions	Direct	CO2 Equivalent Emissions Total (Scope 1 + 2)	0	107,366	55,020	19,288	22,444
	Carbon footprint	Direct	CO2 Equivalent Emissions Scope 1, Scope 2, Scope 3	0	673,313	74,081	20,266	22,968
2. Carbon footprint	GHG intensity of investee companies	Direct	Scope 1,2&3 /Total Revenue (Mill Euros)	0	84.19	10.975	11.40	2.52
3. GHG intensity of investee companies	Share of investments in companies active in the fossil fuel sector	Direct	TRBC Fossil Fuel Industry Groups	0				
		Direct	Renewable Energy Use	0	62.06%			
4. Exposure to companies active in the fossil fuel sector	Share of non-renewable energy consumption and non-renewable energy production of investee companies from non-renewable energy sources compared to renewable energy sources, expressed as a percentage	Direct	Renewable Energy Supply	0				
		Direct	Share of non-renewable energy consumption and non-renewable energy production	0	17.94%			
5. Share of non-renewable energy consumption and production	Energy consumption in GWh per million EUR of revenue of investee companies, per high impact climate sector	Direct	Total Energy Use To Revenues (Mill Euros)	0	0.015		0.019	0.0047
		Direct	TRBC High Impact Industry Groups	0				
BIODIVERSITY								
7. Activities negatively affecting biodiversity-sensitive areas	Share of investments in investee companies with sites/operations located in or near to biodiversity-sensitive areas where activities of those investee companies negatively affect those areas	Partial	Biodiversity Impact Reduction	0	False	False	False	False
WATER								
8. Emissions to water	Tonnes of emissions to water generated by investee companies per million EUR invested, expressed as a weighted average	Direct	Water Pollutant Emissions	0				
WASTE								
9. Hazardous waste ratio	Tonnes of hazardous waste generated by investee companies per million EUR invested, expressed as a weighted average	Direct	Hazardous Waste	0				
Social and employee, respect for human rights, anti-corruption and anti-bribery matters								
SOCIAL AND EMPLOYEE MATTERS								
10. Violations of UN Global Compact principles and Organisation for Economic Co-operation and Development	Share of investments in investee companies that have been involved in violations of the UNGC principles or OECD guidelines for Multinational Enterprises	Direct	Anti-Competition Controversies Count, Recent Anti-Competition Controversy, Business Ethics Controversies, Recent Business Ethics Controversies, Recent Critical Countries Controversies, Critical Countries Controversies, Freedom of Association Controversies, Recent human	0			1	

Need more help?

You can contact us directly through Workspace: select the help icon in the top right corner then go to **Contact Us** and select **Get Help & Support**. Or you can access leaning content on the training site: training.refinitiv.com

